

PCS LICENSE SERVER



Made by PCSCHMATIC A/S

June 2022

How to install the PCS License Server and how to use the installed licenses.



INTRODUCTION

This guide takes you through the installation and use of the PCS License Server, which is the license type used for all PC|SCHEMATIC Programs, - PC|Automation, PC|Cabledim and PC|Cablemanager.

PCS License Server is a software-based license system that does not need additional hardware., which means that the license system can be used with virtual servers. The PCS License Server is installed automatically when you install PC|SCHEMATIC Programs.

You need to install the software on pc's and/or servers that you wish to host the license service.

License types and variations

PC|SCHEMATIC licenses come in different types:

Local license

The license is assigned to a specific pc and can only be used on this pc.

Floating

The license can be shared by more users; the number of simultaneous users are seen in 'Limit'. Floating licenses might be lent to other users.

Borrowed

The license is borrowed from a license owner. A borrowed license can only be used on the pc it's lent to.

And variations:

Flex nn: Projects are limited to nn symbols (excl terminal, signal and wirenumber symbols) and yy pages

Smart nn: Projects are limited to nn pages (excl various list pages)

License types and variations can be mixed independently.



CONTENTS

Introduction	3
License types and variations.....	3
Contents	5
Install the license server	7
New program added to Start menu	8
Configure the License Server	9
Proxy settings.....	9
Activate licenses to the License Server	10
Offline License Servers	12
License update.....	14
Offline license servers.....	14
Borrow licenses	15
Both license servers are available – online.....	15
The license servers are not on the same network (off-line).....	16
Release license	19
Release a valid license (black)	19
Release a borrowed license (blue)	19
Release an expired borrowed license (grey).....	19
Release an expired license (red)	19
Use the licenses in PC SCHEMATIC Programs	20
After restart	21
License server priority	22
Preferred license number	22
Preferred license type.....	23

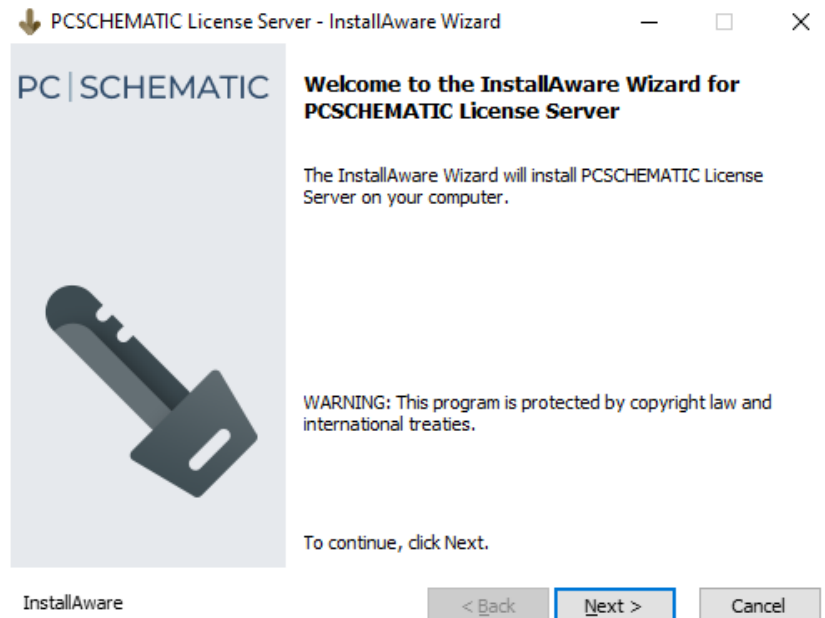


INSTALL THE LICENSE SERVER

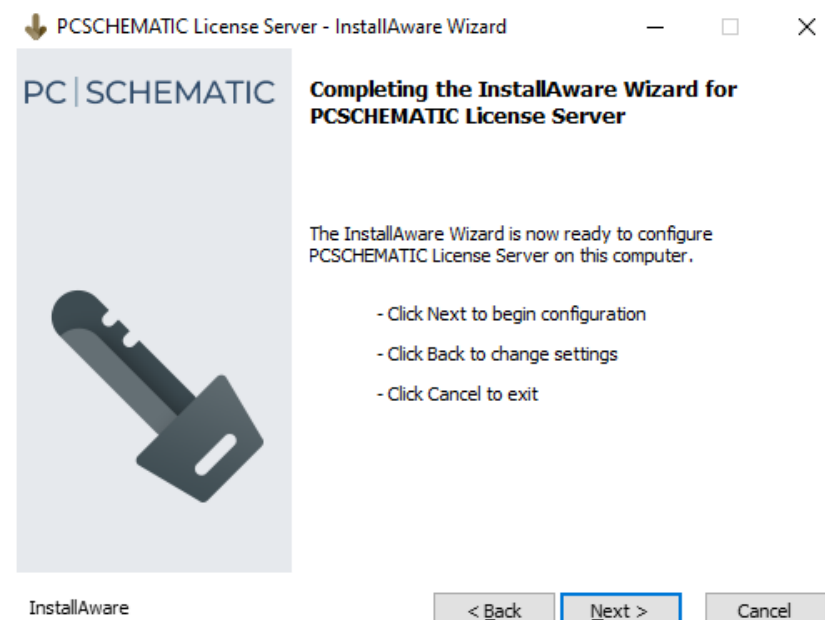
Run the PCSLicenseServerXX.exe to install the PCS License Server and the License Manager on the pc/server you want to host the license service.

The InstallAware Wizard starts as seen below.

Click Next to continue.



Click Next to continue.

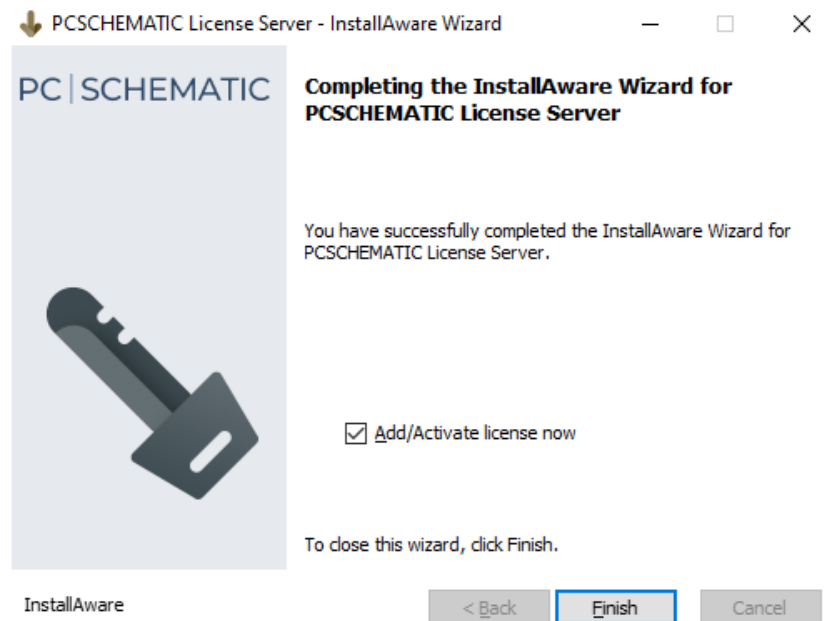


Now the PCSCHEMATIC License Server is installed.

You are now ready to configure the license server and to start the license manager for your system.

Click Finish to close the wizard.

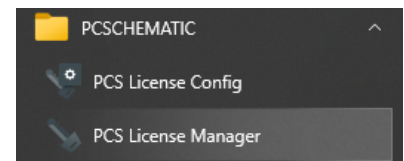
If you checked the checkbox you go directly to adding/activating your license(s) when you click Finish.



New program added to Start menu

The license program is added to the Start menu.

You can start the License Config and the License Manager from here.



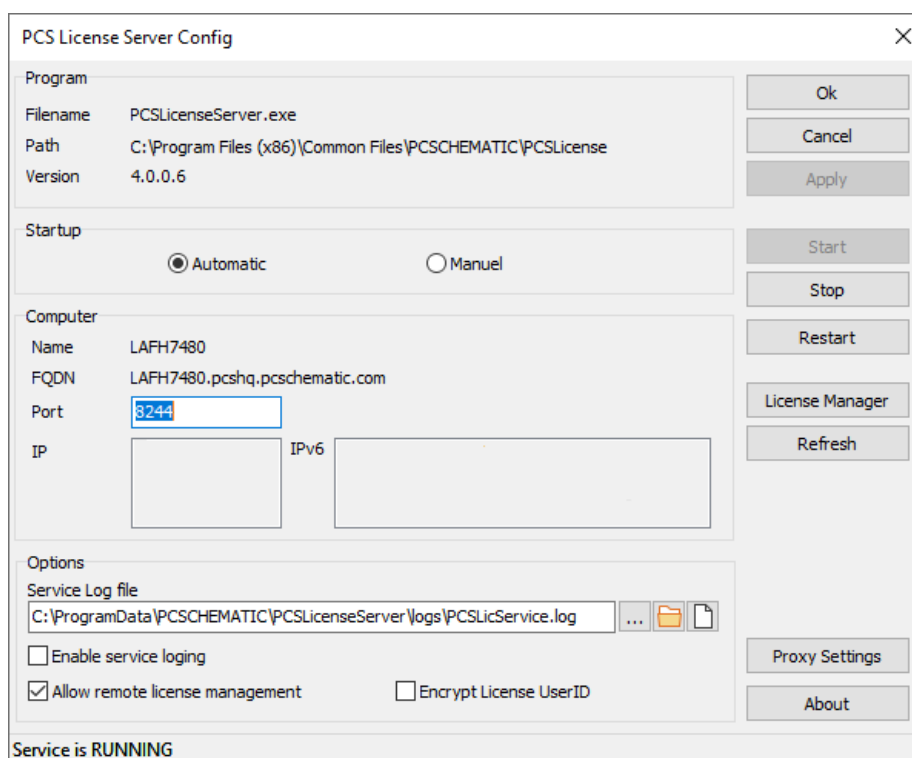
Configure the License Server

Open the PCS License Config.

In this window you can see the name and version of the license server in your system as well as the name and IP-address of the computer on which it is installed.

You can enable the ServiceLogfile. The logfile can give you extra info, if you have problems with the service, however, it does not log license-usage, only status for the service. You can find further status info in the Eventlog.

You can also configure the TCP-port. Default port is 8244 and we don't recommend you change this unless you have a conflict with another program installed on your server.



Status for the service is currently RUNNING and you are ready to add licenses to the server.

You do that with the License Manager.

Proxy settings

You can set proxy settings by clicking the button.

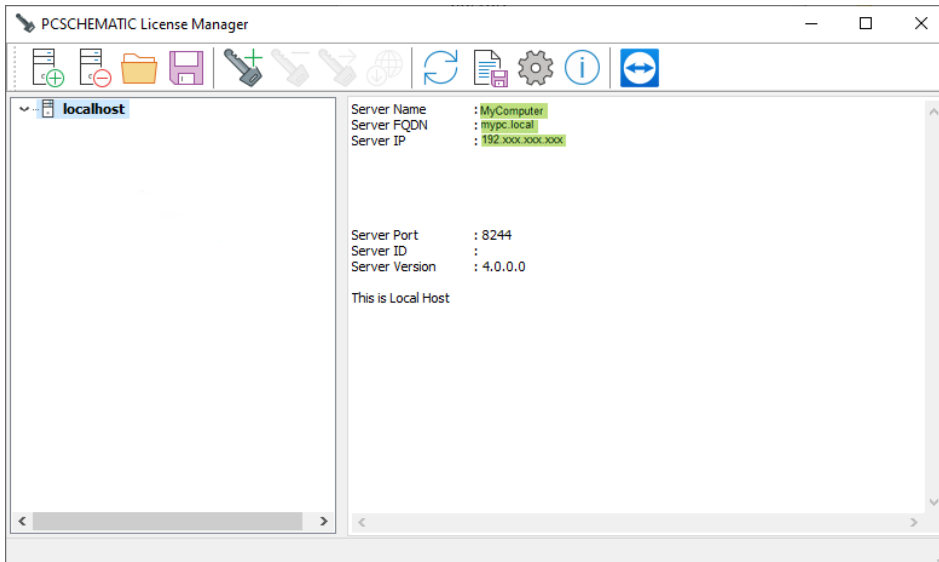
Activate licenses to the License Server

When you click the button License Manager in the License Config window, you enter this window.

Here you see the name of the License Server.

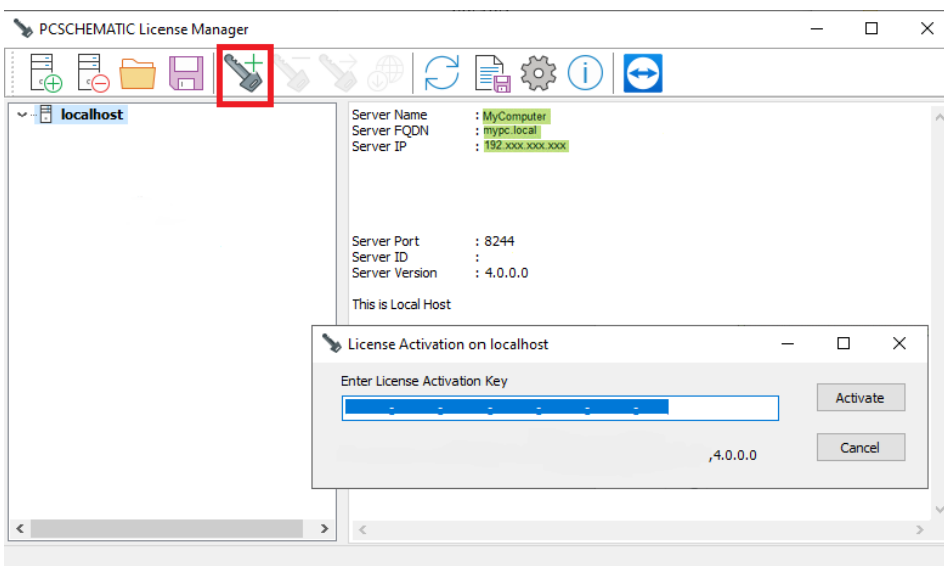
In this example the license server is the local computer, also called 'localhost'.

Click 'localhost'.

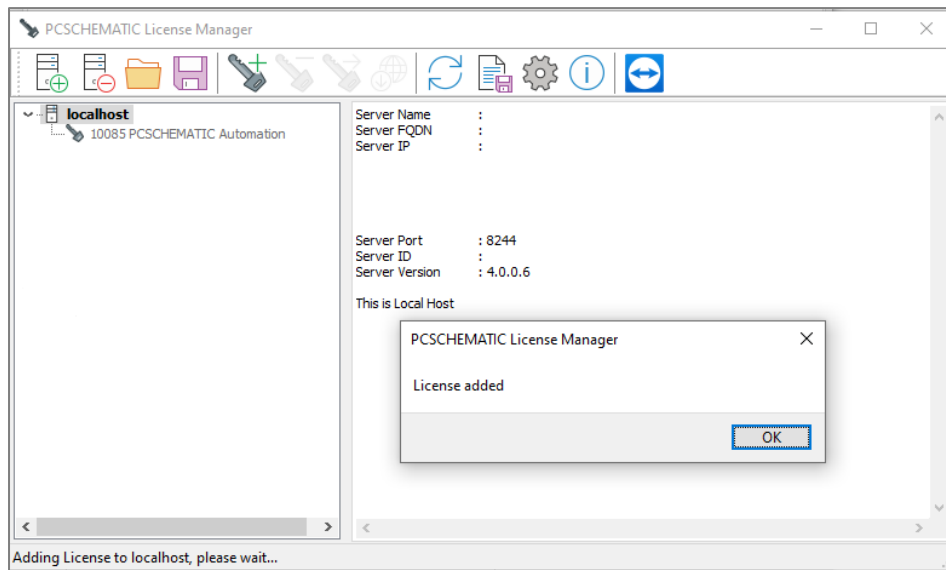


You add/activate your license by clicking the Key+ icon. Type in the license activation key in the pop-up window and click the Activate button.

You get the license activation key in an email from PCSCHEMATIC when you buy the license to any program. PCSCHEMATIC can resend the license activation key in case it has been lost.

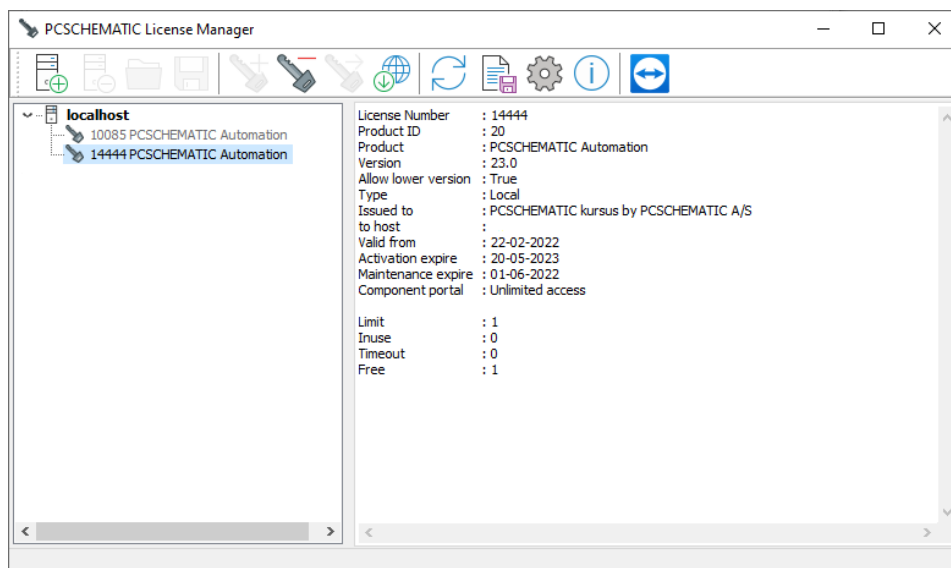


If the license activation succeeded, you get this pop up and the license is ready for use.



You can add more licenses to the server by pressing the key icon again.

When the licenses are installed on the server, you can see the licenses and status for them in this window, including a use list.



A license can be a single or a multi-user license. Info about the license can be seen in the above window. The current license – 14444 – is a local license with 1 user.

Offline License Servers

Offline License Servers come in different ways:

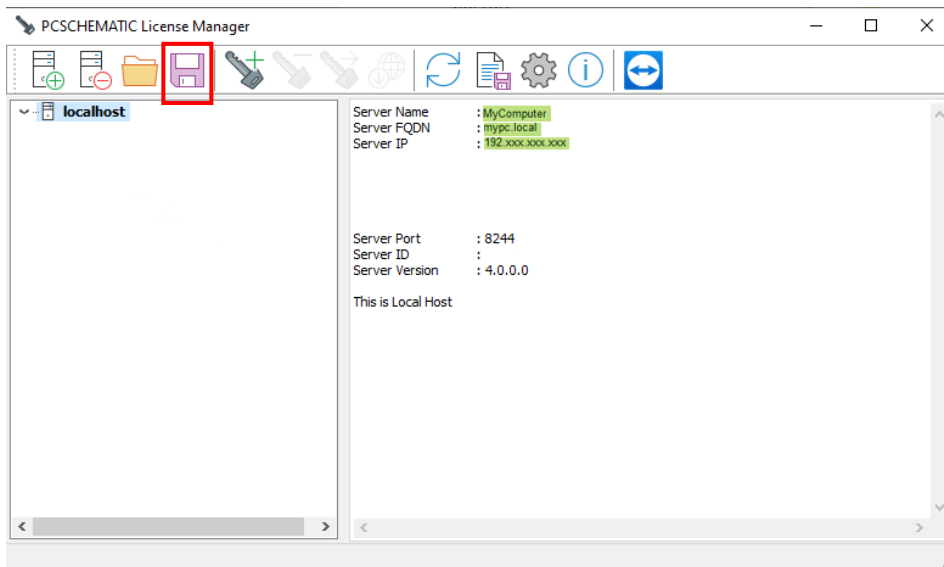
- If your local License Server has no internet connection, you can use the License Manager from another pc with internet connection and access to your License Server. (The License Manager is installed as part of all PCSCHEMATIC programs, too.)
- If both the License Server and the License Manager are without internet connection, you can use the procedure below to activate the license.

NOTE: This procedure must be repeated each time the license is changed, at least once a year.

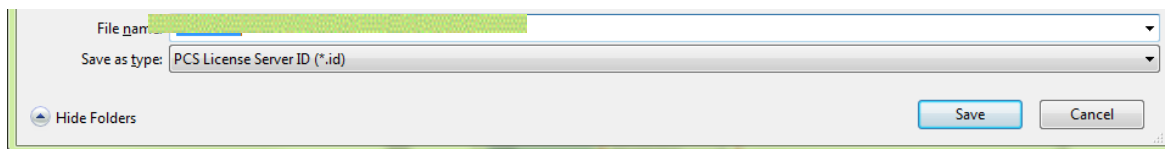
1. Save license server ID

Select the license server and press the Save button.

The saved license ID file must now be transferred to a pc with internet access and the License Manager installed. The pc can be in your company, or you can mail the file to PCSCHEMATIC support.

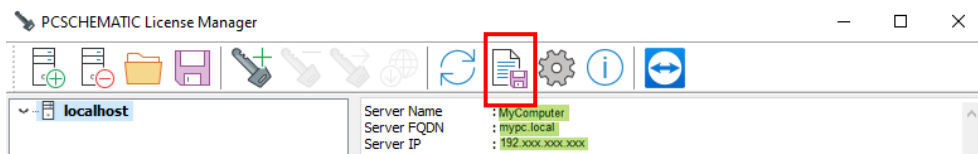


The filename is MyComputer.id.

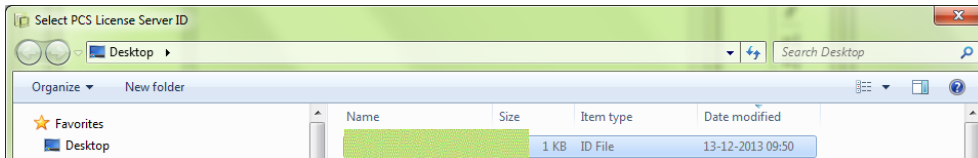


2. Activate license file

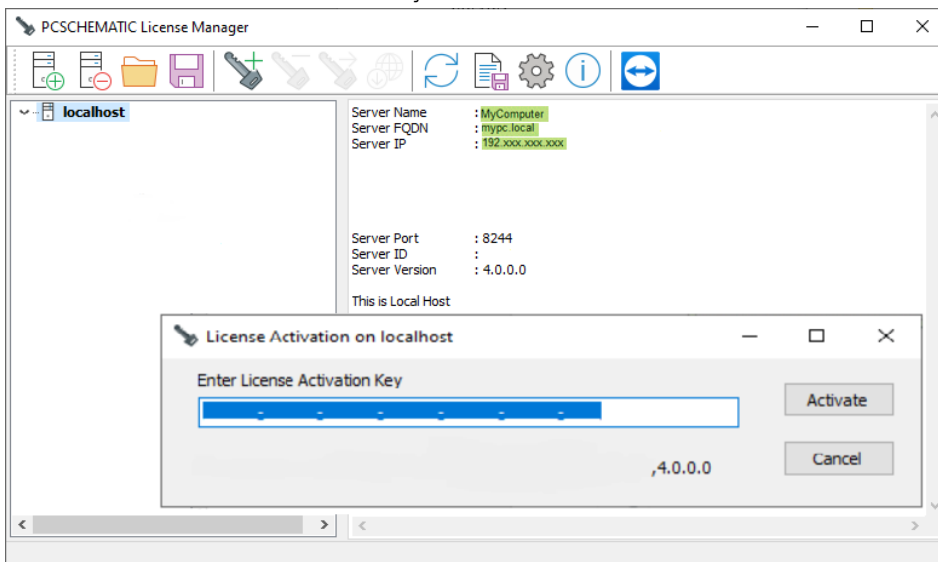
On a pc with internet access, open the License Manager and start by clicking the Activate license.



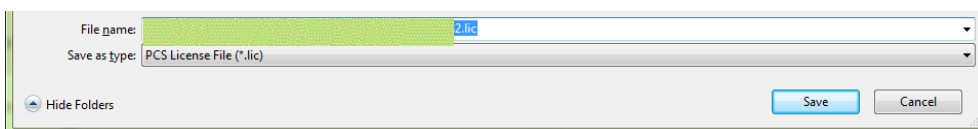
Select the file you saved in step 1 and click Open.



Enter the license activation key and click Activate.



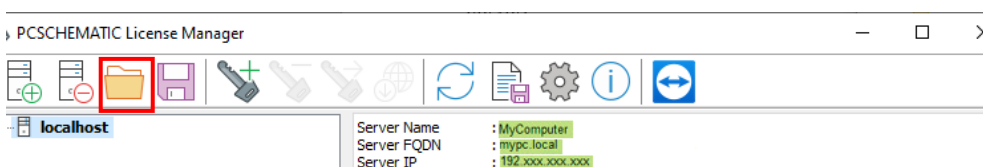
Save the activated license file.



Transfer this file to the offline license server.

3. Add the activated license file to offline license server

Start the License Manager on the offline server. Select the server, click the Add license file button and select the activated license file.



LICENSE UPDATE

Licenses are issued to be valid for one year. Unless you rent a license for shorter period.

If the License server has internet access, the licenses are automatically updated, which means that expiry dates are updated.

Licenses with Maintenance contract are automatically upgraded to the latest version.

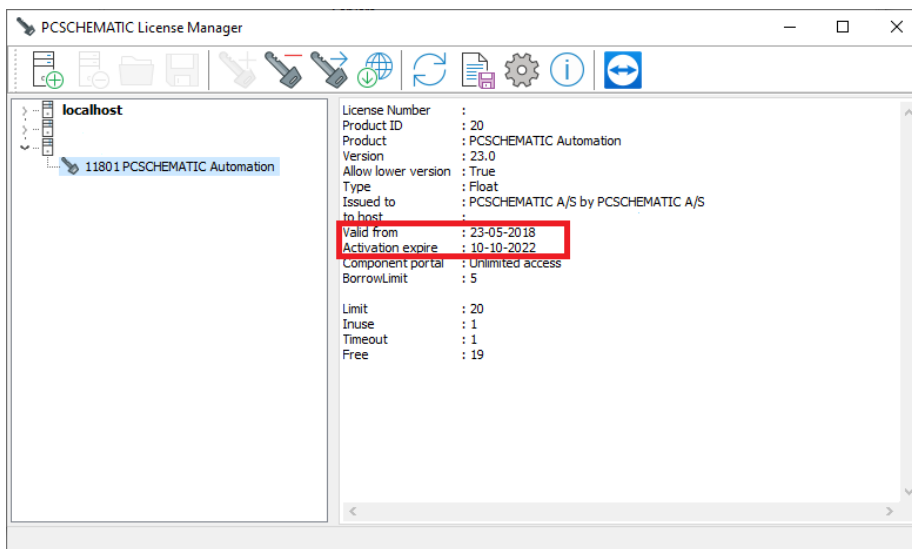
If you buy an upgrade for your license, you can force the update by clicking the Update button (globe).

Offline license servers

Off-line license server can be updated manually by using the License Manager from a pc (with a PCSCHMATIC Program installation).

Select the specific license and click the update button (the globe).

If this is not possible, you need to remove the license and reactivate it again by following the instructions in the chapter Offline License Servers.



BORROW LICENSES

Licenses are assigned to a specific License Server. However, it is possible to borrow licenses from other License Servers, as well as you can lend your licenses to other License Servers.

Info to 'old' PC|SCHEMATIC users

The Borrow function is similar to the old method called 'License Tank', but the method is different:

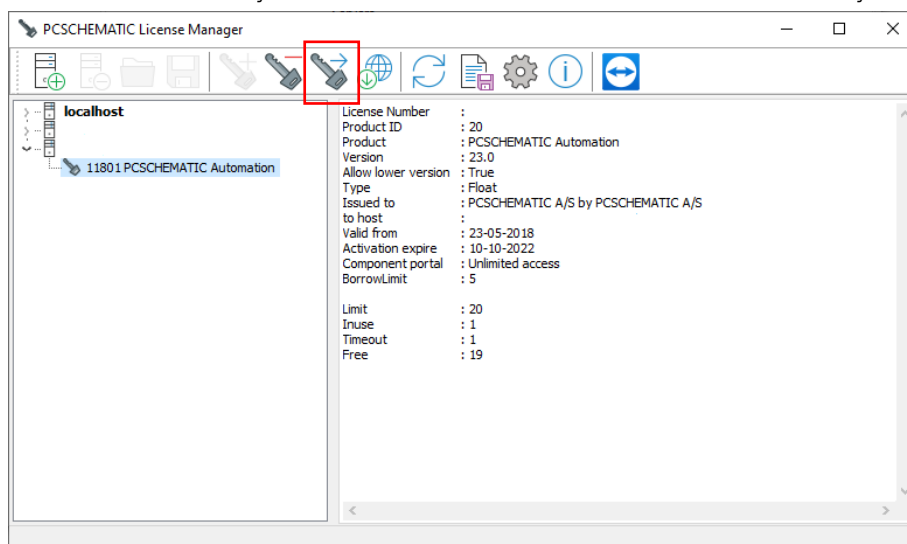
Borrowing with software licences is borrowing between license servers and is carried out by/on the license servers. No functions are carried out in PC|SCHEMATIC Automation.

NOTE: You can only borrow a license if you have PCSCHEMATIC license server installed on your pc.

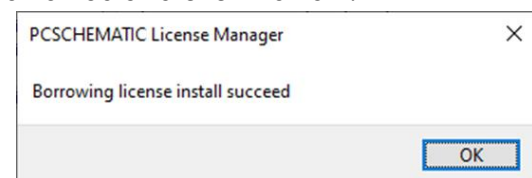
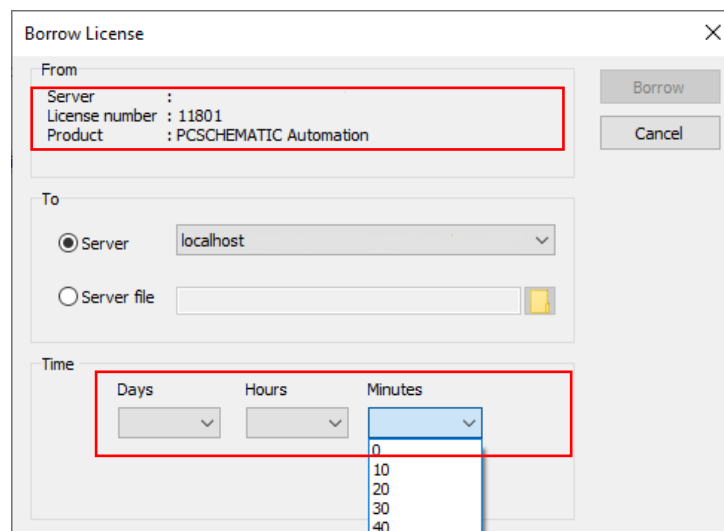
Below you see the steps that you go through when you borrow and/or lend a license. The two servers are the Borrower and the Lender.

Both license servers are available - online

Select the license you want to lend out and click the Borrow key.

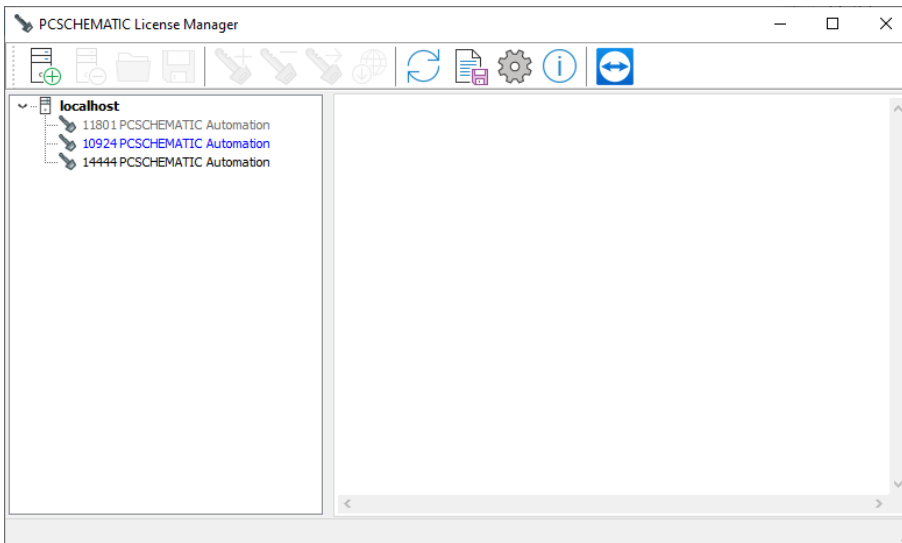


Here you select the Borrower, and you select for how long time the license must be borrowed and click Borrow.

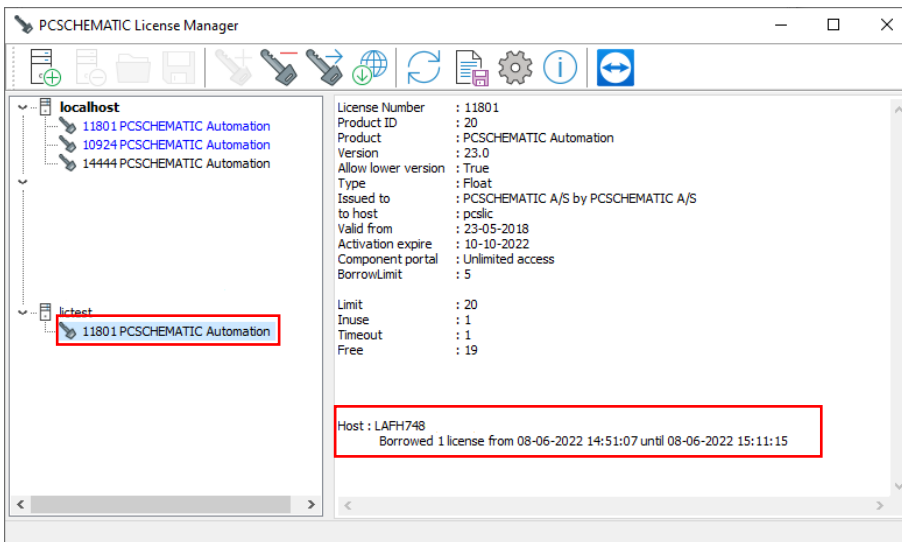


Click OK to close the window.

When you expand the Borrower, the license is blue, when it's active. After time-out it turns grey and becomes inactive.



If you expand the Lender, you can see who has borrowed the license in the use list:

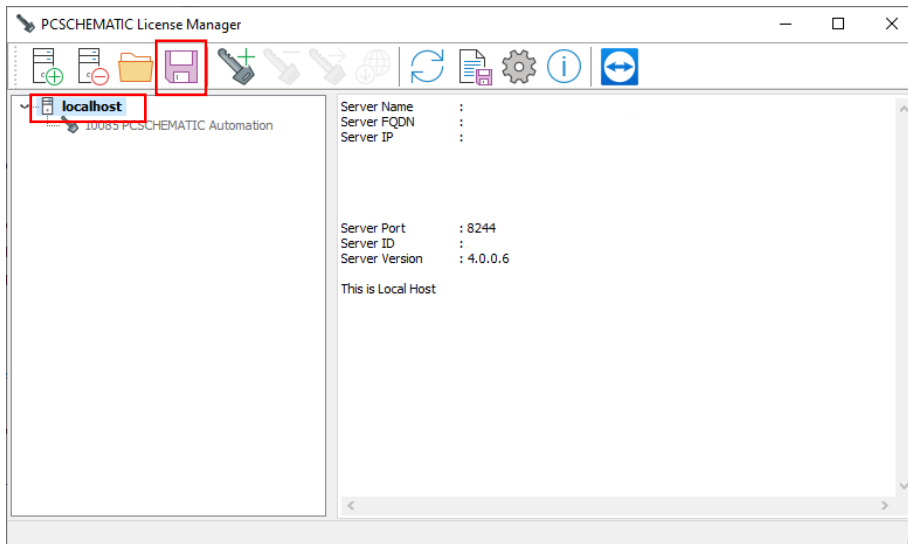


The license servers are not on the same network (off-line)

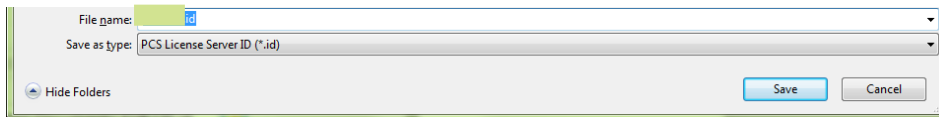
If you cannot see both license servers, you must follow another routine than the described above.

The Borrower starts: Click the button Save License Server ID:





It saves as MyComputer.id

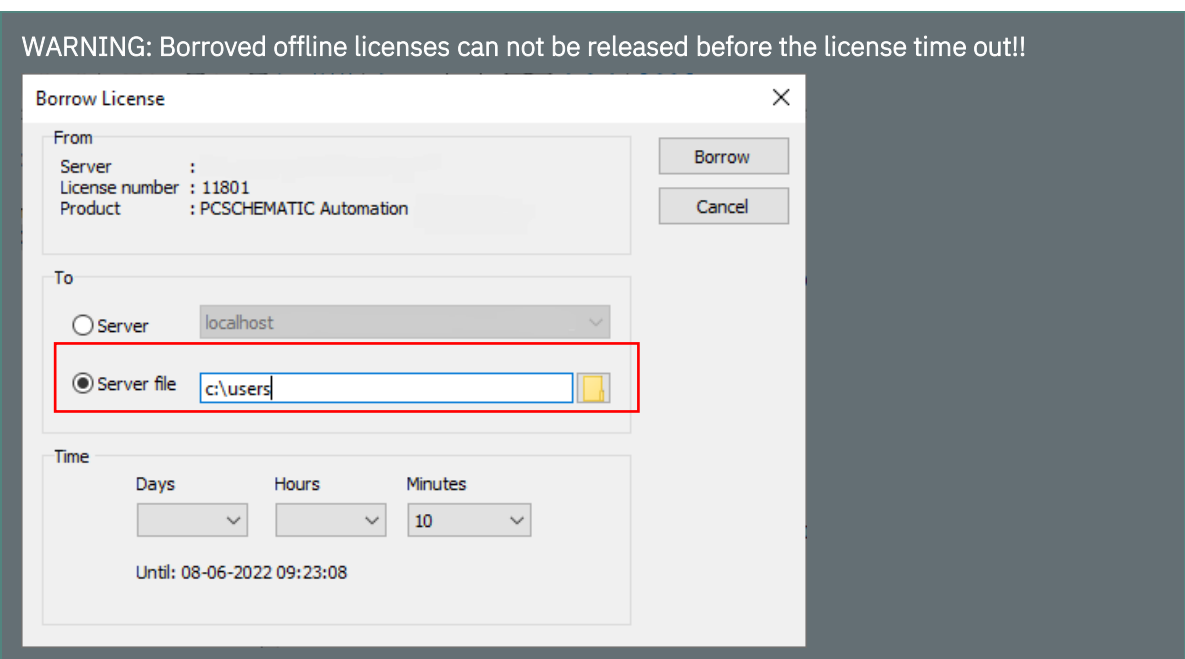


Transfer this file to the Lender.

The Lender selects the license that should be lend and clicks the button Borrow this License:

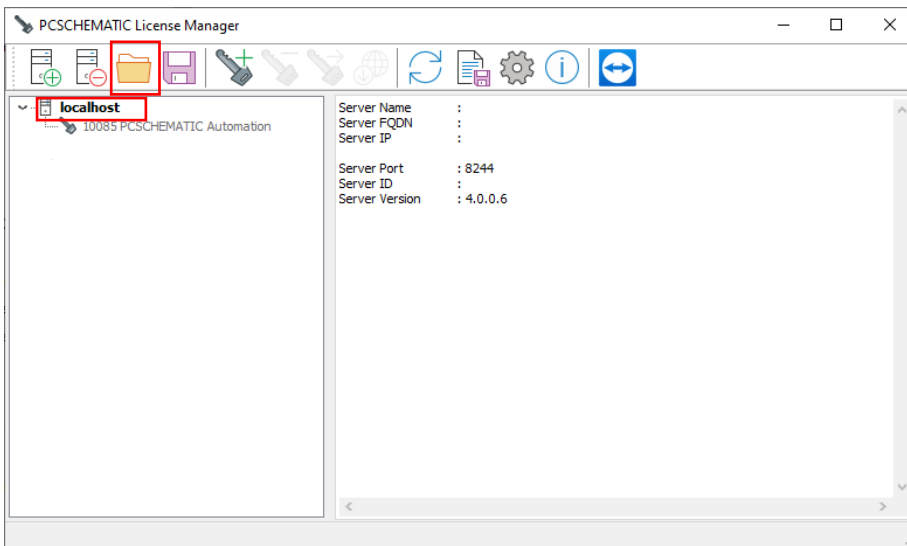


and selects the server file for the Borrower and sets the time:

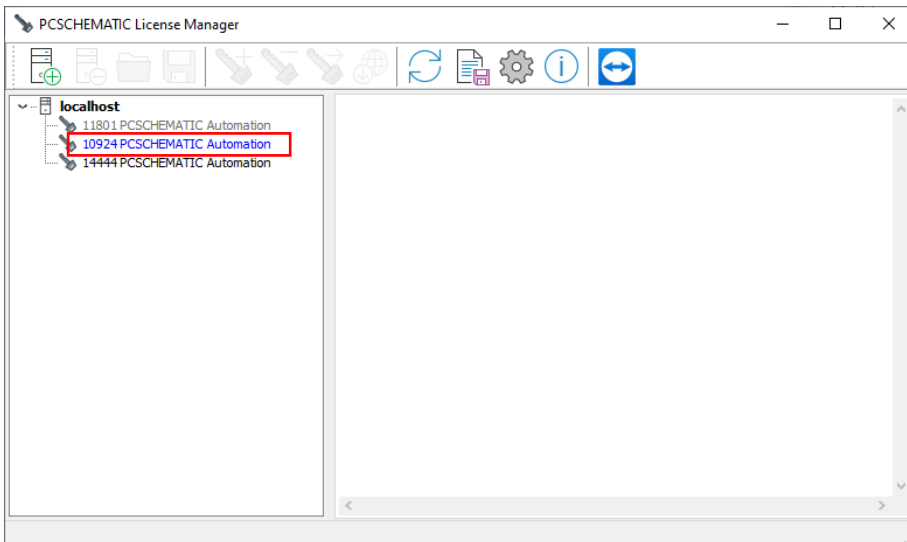


Click Borrow, the file is saved as a *.lic. Send the file back to the Borrower.

At the Borrower: Select your license server, click the button Add license... open the license file.

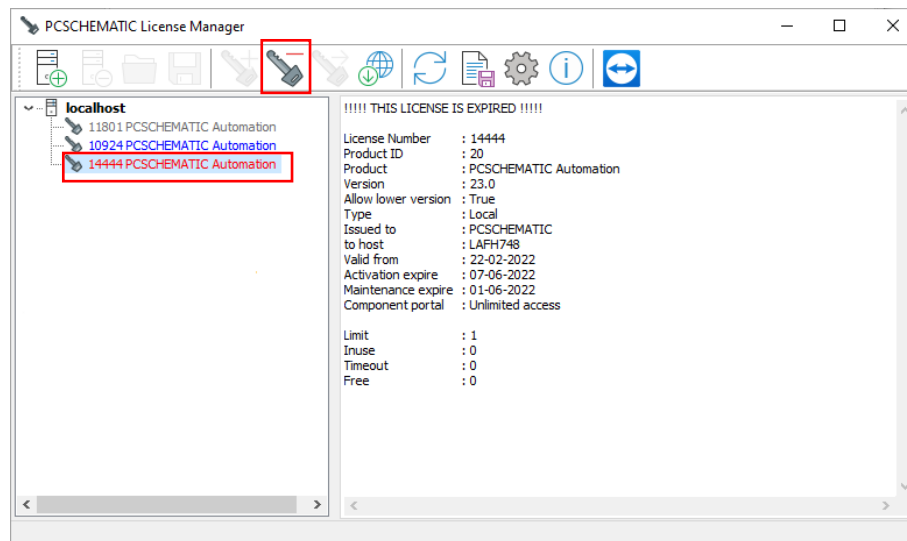


When the borrowed license file is active, it is blue.



RELEASE LICENSE

Select the license you want to release, and click the Release button:



License color codes

- Black** Valid (normal) license.
- Blue** Active borrowed license.
- Grey** Expired borrowed license.
- Red** Expired license.

Release a valid license (black)

Select the license that you want to deactivate.

It disappears from the list and can be activated again – on any license server – see Activate licenses to the License Server.

Release a borrowed license (blue)

Select the license that you want to release before the borrow-period expires. Released licenses will become available on the Lender server.

The License Servers must have a communication connection for this to work.

Release an expired borrowed license (grey)

Select the license that you want to release after the borrow-period expires.

Expired borrowed licenses remain in the list but turn grey. This is done to make it easy for the user to remember which license(s) he/she has borrowed, in case of preferences. If the user wants the same license again, it can only be activated by following the procedure described in the chapter Borrow licenses.

Release an expired license (red)

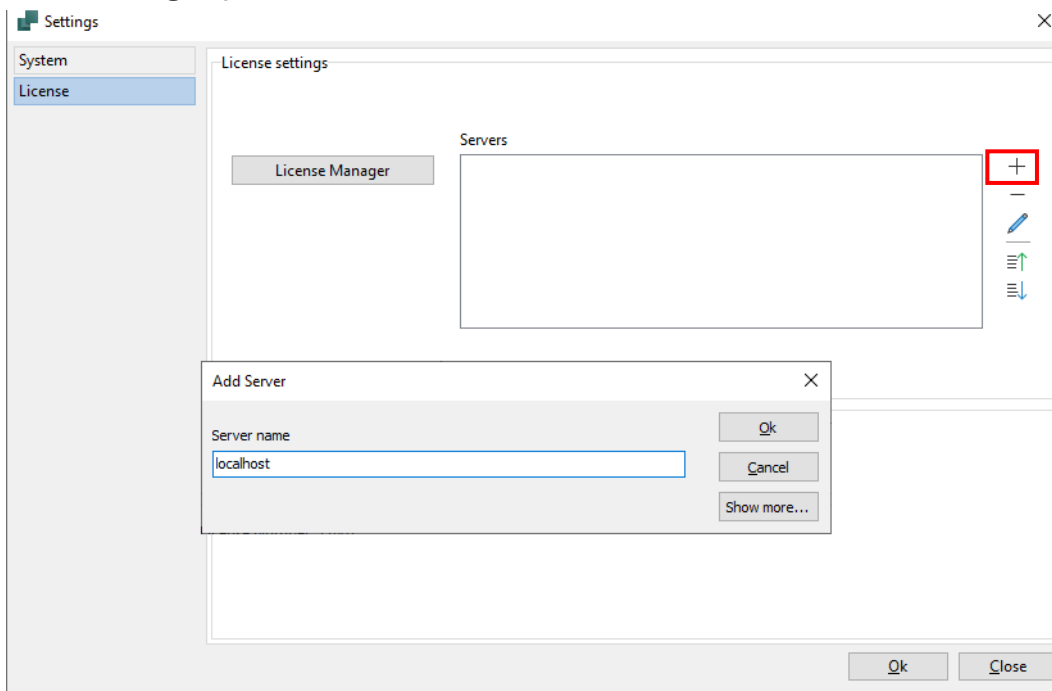
Select the license that you want to release.

Red licenses are expired licenses. If you need a license upgrade, please contact PCSCHEMATIC Support or Sales.

USE THE LICENSES IN PC|SCHEMATIC PROGRAMS

Start the program, Automation, Cabledim or Cablemanager.

Go to Settings|System/License.



Press + to add a server. If your server is your local computer, you can write 'localhost'. Else you need to write the license server's computer name, FQDN or IP-address (the IP-address of Localhost is 127.0.0.1.).

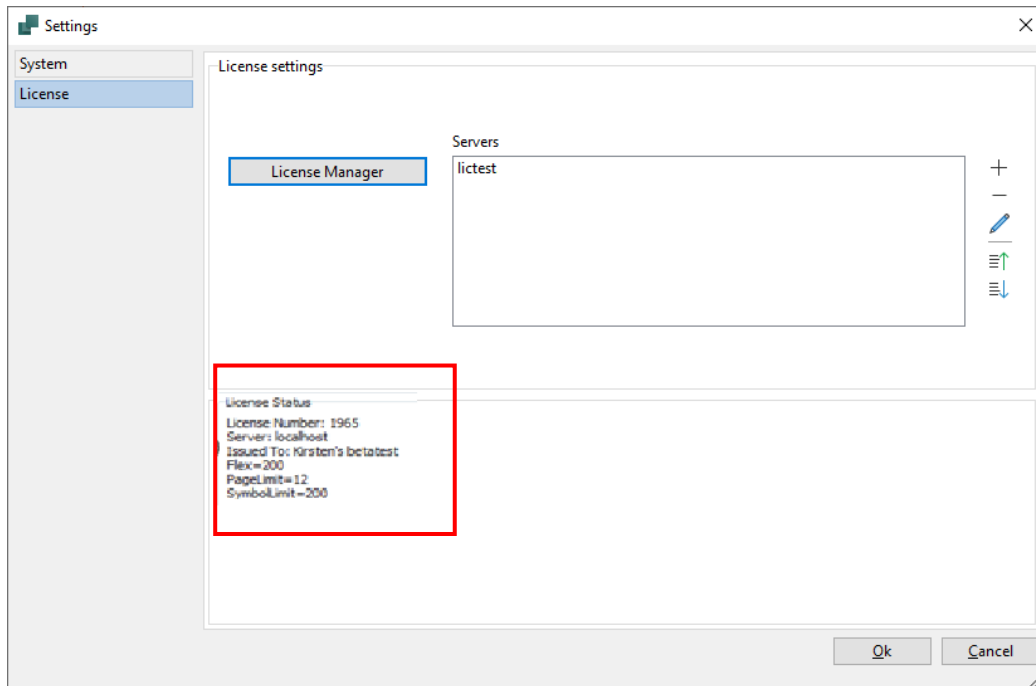
Click OK in the Add server dialog. Close the program and restart it.



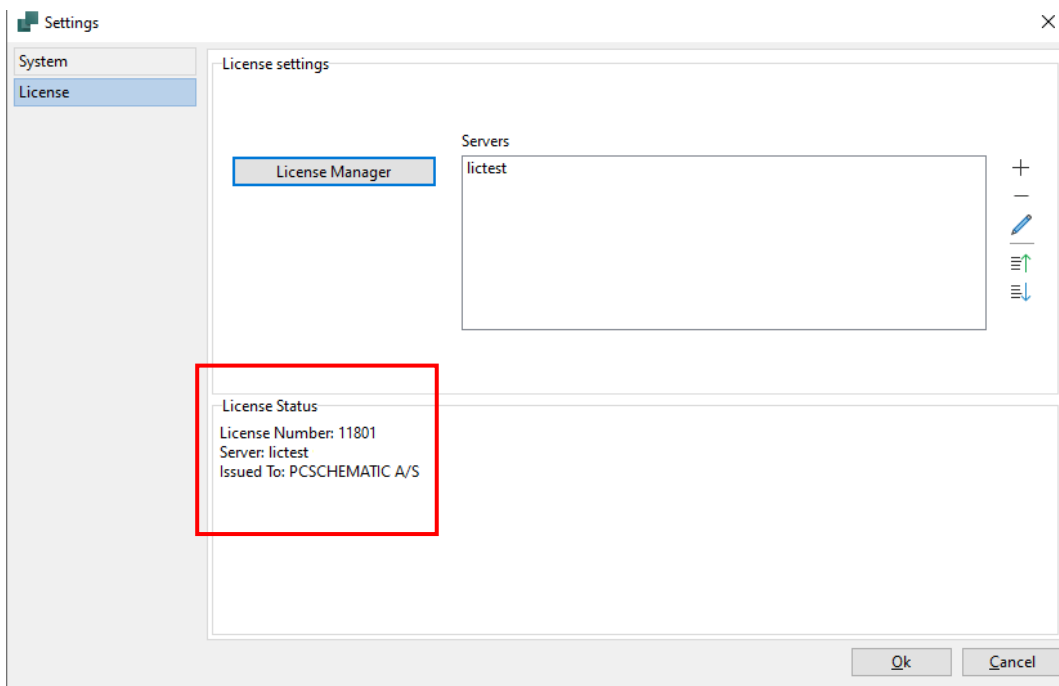
After restart

Now the PCSCHEMATIC program is licensed.

You can see license status in the System/License dialog, here a Flex200:

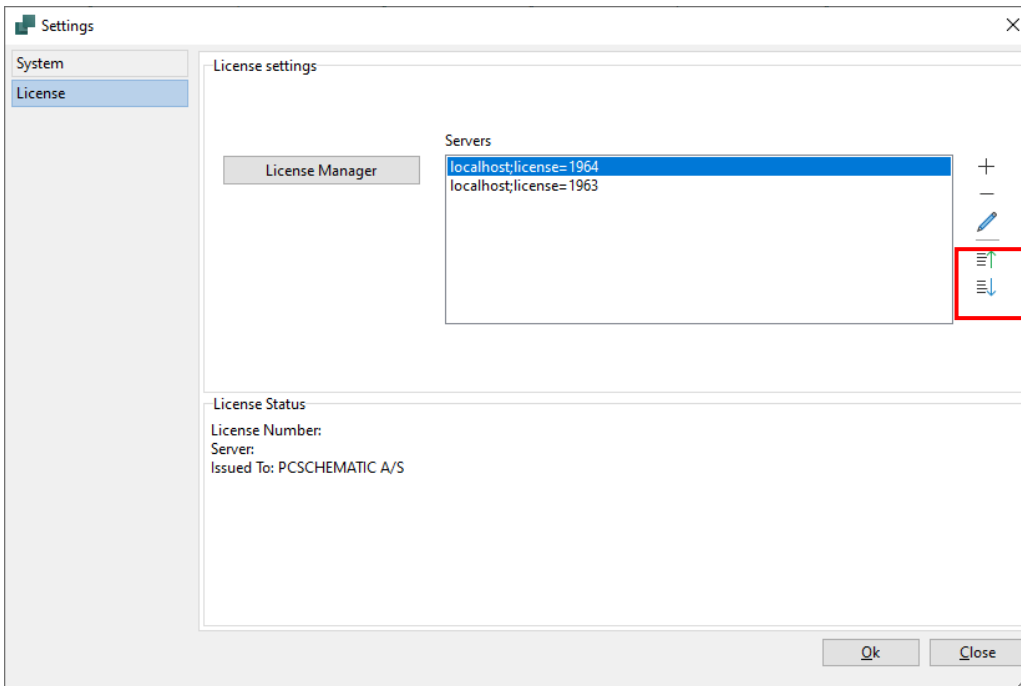


and a full license:



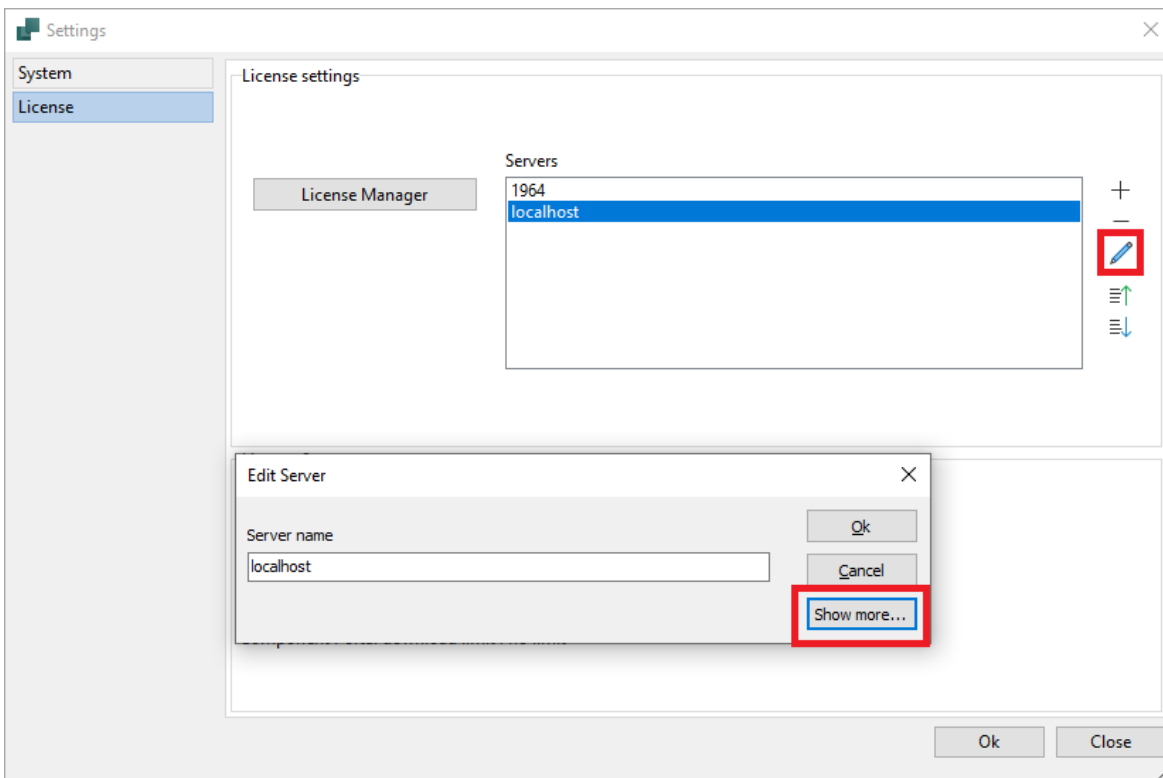
License server priority

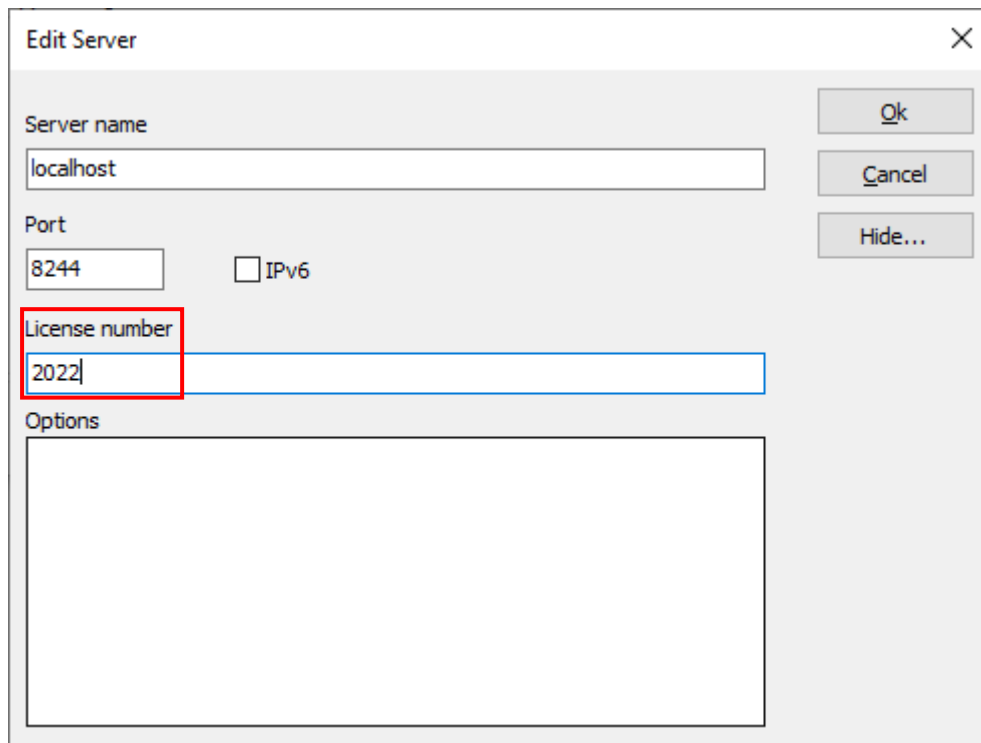
If you have more available license servers or more than one license per server, you can have a prioritized list for using the licenses. Use the arrows to move servers/licenses up or down.



Preferred license number

A license server can contain more than one license key. You can lock the program to one of those license keys by editing the server and type the license number:



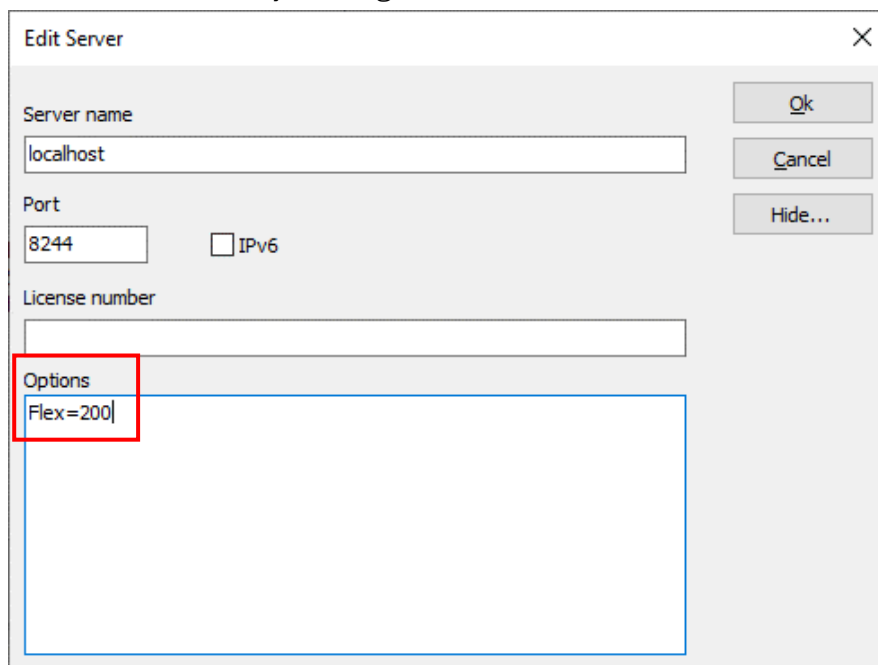


The screenshot shows the 'Edit Server' dialog box. The 'Server name' field contains 'localhost'. The 'Port' field contains '8244' and the 'IPv6' checkbox is unchecked. The 'License number' field contains '2022' and is highlighted with a red box. The 'Options' field is empty. On the right side, there are three buttons: 'Ok', 'Cancel', and 'Hide...'.

Preferred license type

A license server can contain more than one license with options. You can lock the program to one of those licenses by editing the server and specify the options:

Here the user is only looking for Flex200 licenses.



The screenshot shows the 'Edit Server' dialog box. The 'Server name' field contains 'localhost'. The 'Port' field contains '8244' and the 'IPv6' checkbox is unchecked. The 'License number' field is empty. The 'Options' field contains 'Flex=200' and is highlighted with a red box. On the right side, there are three buttons: 'Ok', 'Cancel', and 'Hide...'.