

AUTOMATION SERVICE



Made by PCSCHMATIC A/S
December 2022



INTRODUCTION

This booklet describes how to use the program Automation Service.

Definitions ...

PCSCHEMATIC Automation is an electrical CAD program, that you use to design electrical diagrams, general arrangement drawings, parts list etc. for documentation.

PCSCHEMATIC Automation Service is a program to show, navigate and work with the diagrams. You can use it to print the projects, navigate by using the Net Navigator and the references, you can export to 3rd party programs, e.g. from which you can print out labels.

Books in the series about Automation:

Quick start

Motor control

Component Wizard

PLC-project

Labelling and Marking

Electrical Installation

Panelbuilder

Mounting Assistant

Automation Service



Contents

Introduction	3
Definitions	3
Open the program.....	6
Open a project	6
Zoom in the project	6
Panning in a Project.....	6
Printing options.....	7
Print a single page.....	7
Print several pages.....	7
Print dialog	7
PDF	8
Export to PDF	8
Navigate in the project	9
Page menu – overview of the project pages	9
Select a page.....	9
Table of contents.....	10
List of reference designations.....	10
Component list	10
Navigation using cross references.....	11
Navigation using symbols	11
Net Navigator	12
Object lists (F7).....	13
Search in the Object List	13
Information about the different objects.....	14
Component accessories.....	14
Select active layer and visible layers	15
List to file.....	16
Print lists and labels.....	16
Settings.....	17
Project data.....	17
Page data	17
Page remarks.....	17
Component Database.....	18
Change language	18
Reference points	18
Change color on Reference points.....	19
Shortcuts.....	19

OPEN THE PROGRAM

Open the program by clicking on the icon on your pc:

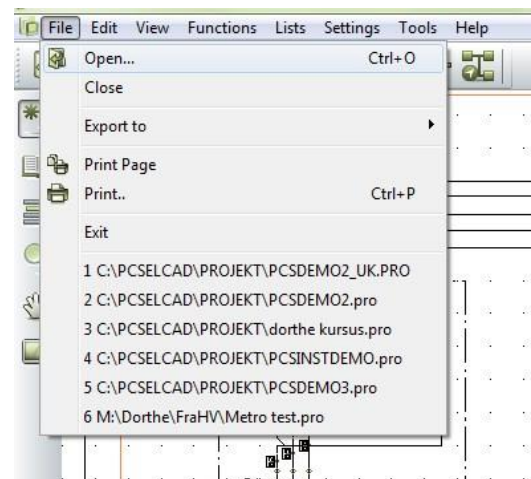
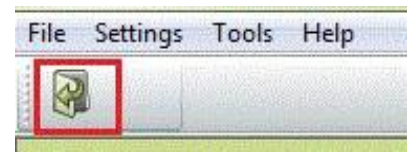


Open a project

Click on the Icon and find the wanted Project.

The ten latest used projects can be opened directly from the File menu.

How fast a project is opened depends on the size of the project.



Zoom in the project

The zoom-icon is in the vertical toolbar.

When you click on the icon you get an oblique \leftrightarrow , as you can use to frame an area you want to zoom on.

You get the whole picture back by clicking on the lower icon, press Home or ZZ.

Alternative you can zoom in/out by pressing the Ctrl-button while you are scrolling the wheel on the mouse. You always zoom from the point the cursor is on.



Panning in a Project

The panning-icon is in the vertical toolbar.

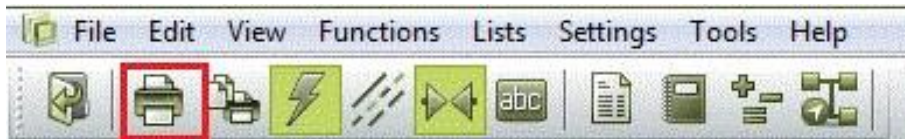
If you need to move around on a page, then click on the panning-icon and start panning around the page.



PRINTING OPTIONS

Print a single page

If you press on the first printing-icon, the current page is printed.



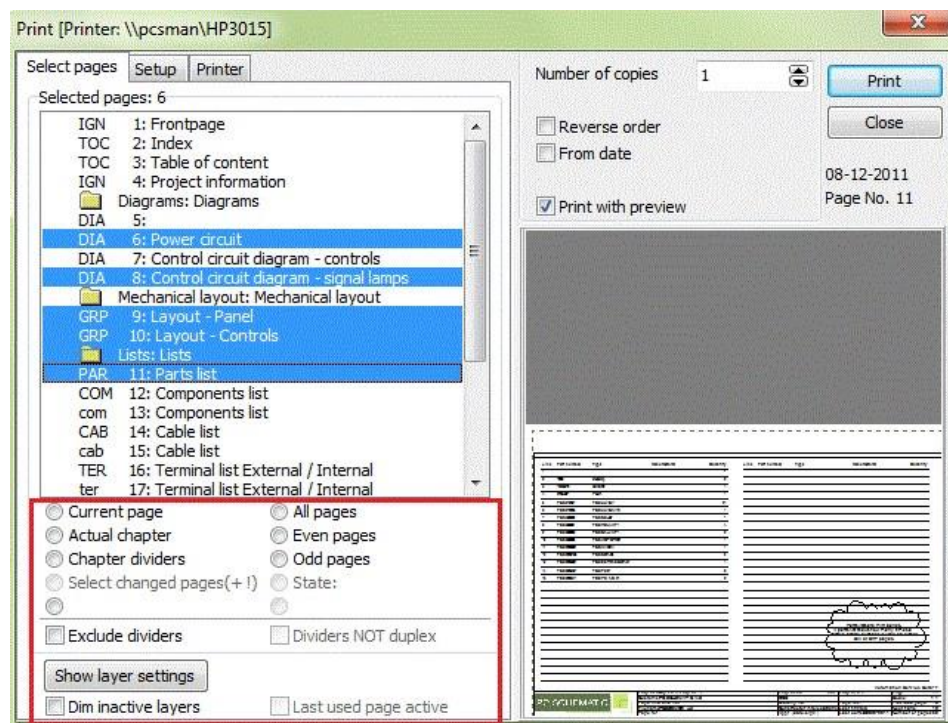
Print several pages

Press on the other printing-icon and the printing-dialog shows where you can choose several pages.



Print dialog

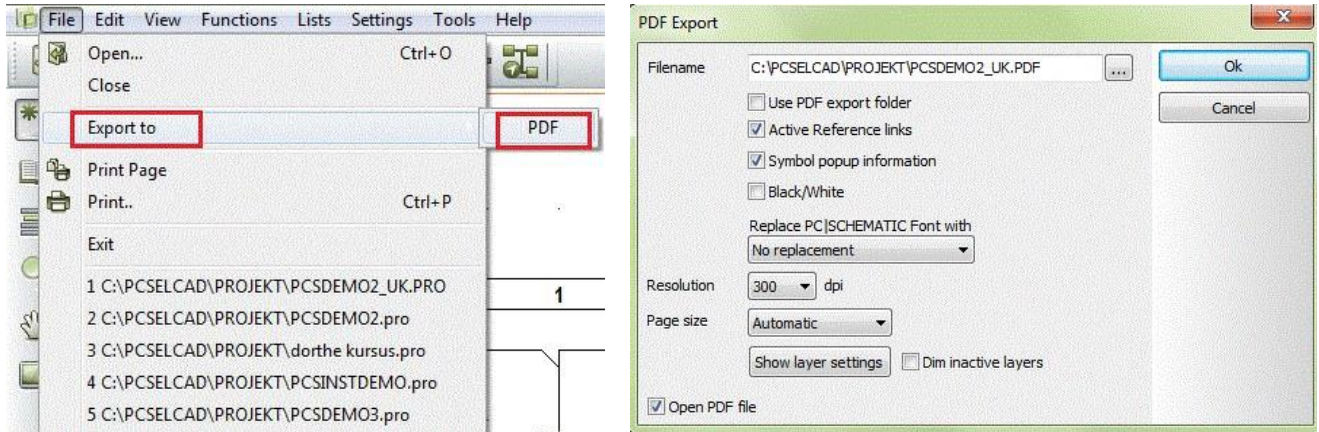
In the print dialog you can choose between different ways of selecting pages. You can also select several pages by Ctrl+click on the wanted page/pages or Shift+click for a row of pages.



PDF

Export to PDF

You can export a project to a PDF. In the dialog box PDF export, you have different opportunities for what needs to be active in the PDF file – mark and press OK.



NAVIGATE IN THE PROJECT

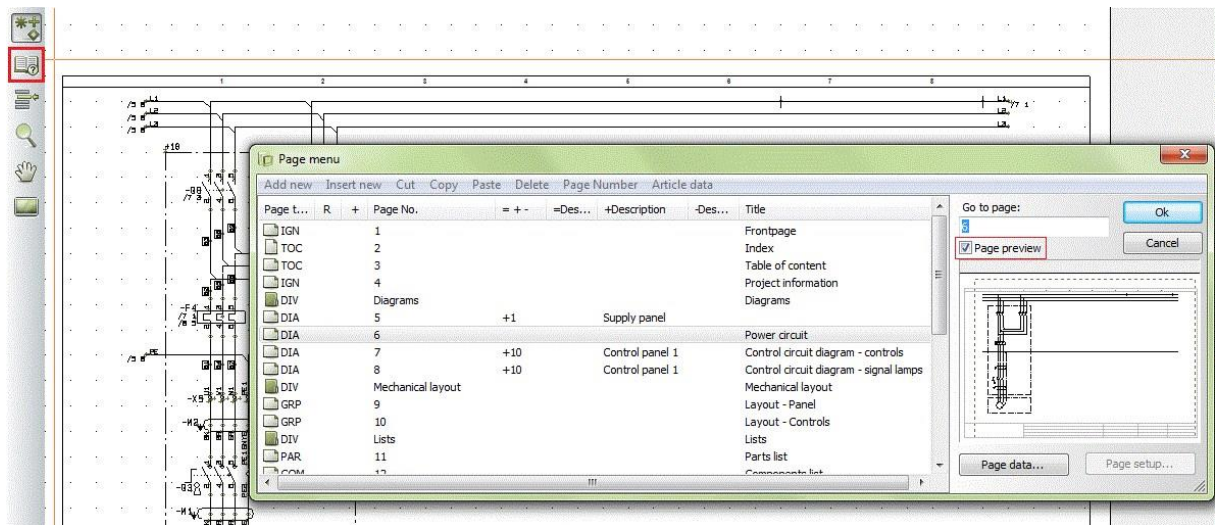
You might need to search or navigate in the project or on the pages. Depending of what you are looking for, you have several options.

You can either look for certain pages, components, or reference designations etc. Below, you can see how you get around in the project.

Finally, you can see what options you have on each page.

Page menu - overview of the project pages

You find the page menu in the vertical tool bar. The page menu shows all the pages in the project and all the data regarding these.



Page type: DIA means diagram. Other important pages can be TOC index, COMponent list, IGNored. You can see if the paper is standing or lying.

R means that revision is active on the page

Page no. Is obvious. "Missing numbers" in the numbering is possible because you can number the pages as you like.

=+- - Contains the total reference designation, which is composed of Function designation (=) Location designation (+) and Product designation (-). The elements of the code refer to function, location, and product, respectively.

Description All 3 aspects have separate columns.

Title on each page.

In the right part of the dialog, you have a preview of the selected page.

Select a page

It's possible, only by using the page menu, to navigate to a certain page. Open a page by double-clicking or by marking it and then click OK.

You can flip back and forth in the project by clicking on the tabs in the bottom and by using PageUp and PageDown keys.

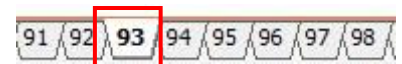


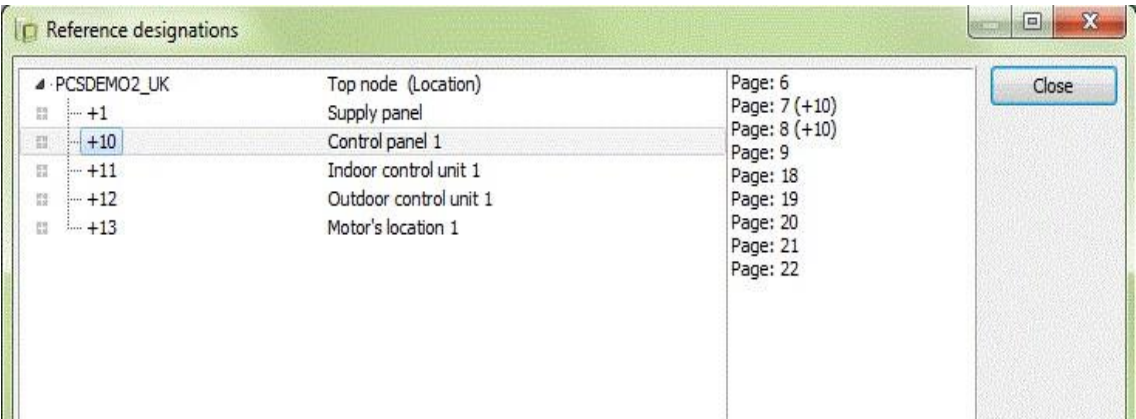
Table of contents

All lists have active links. This means that you can "jump" directly to a page from the table of contents.

List of reference designations

By clicking on the icon, you open the list of reference designations.

When you place the cursor on a designation, you get a list of the pages where it's used. When you double-click on a certain page you "jump" directly to it.



Component list

In the same way you can "jump" directly from the Component list to a component, as all lists have active links.

File Edit View Functions Lists Settings Tools Help						
Line	Component	Part no.	Type	Manufacturer	Source	Description
1	+10 -F4	PCS2250001	PCSMV001A			Thermal overload type 1a
2	--- -Q3	PCS2250301	PCSSERDISCON01			PCS service disconnect type 1
3	--- -Q8	PCS2250106	PCSCON06			Contactor 3POL 1NO 2NC type1
4	--- -Q9	PCS2250106	PCSCON06			Contactor 3POL 1NO 2NC type1
5	--- -W1	PCS330002	PCSCBL02			4 conductors without screen
6	--- -W2	PCS330002	PCSCBL02			4 conductors without screen
7	--- -W3					
8	--- -W4					
9	--- -W5					
10	--- -W6					
11	--- -W7	12345678	corner20			

Navigation using cross references

There are references between everything in a project with the same name. This means that there are references between eg coil and contacts in a relay and between signals with the same name on different pages.

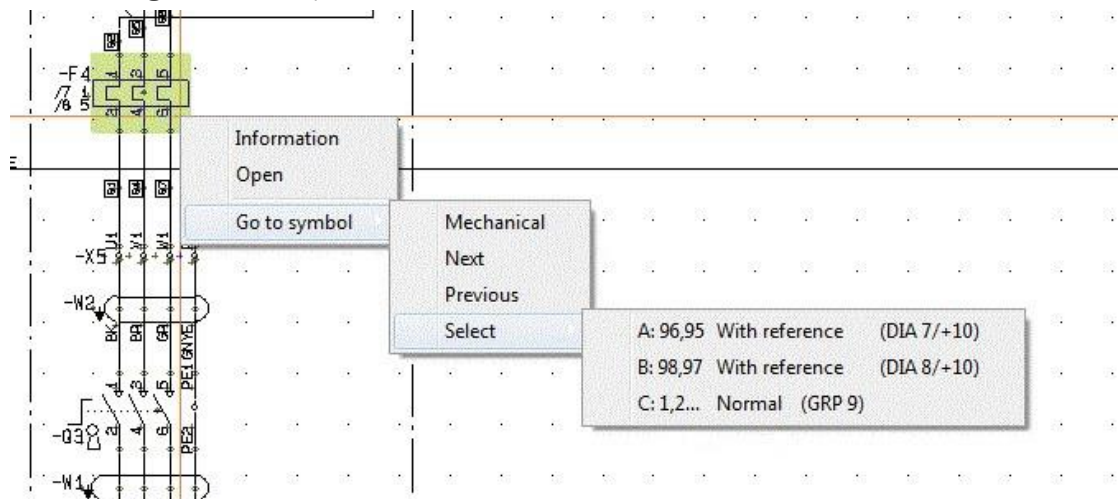
These cross references are also active links, allowing you to "jump" directly to the current position.

Links may look like this:

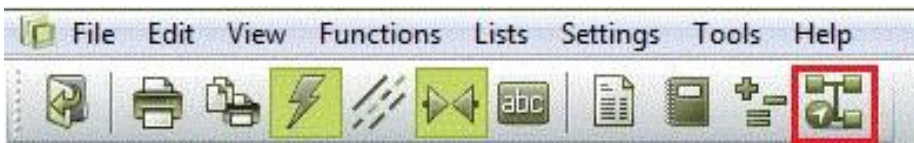


Navigation using symbols

When you right-click on a symbol and select Go to symbol – Select, you can choose among a component's electrical or mechanical symbols. You can "jump" between them using Next and "previous".



Net Navigator



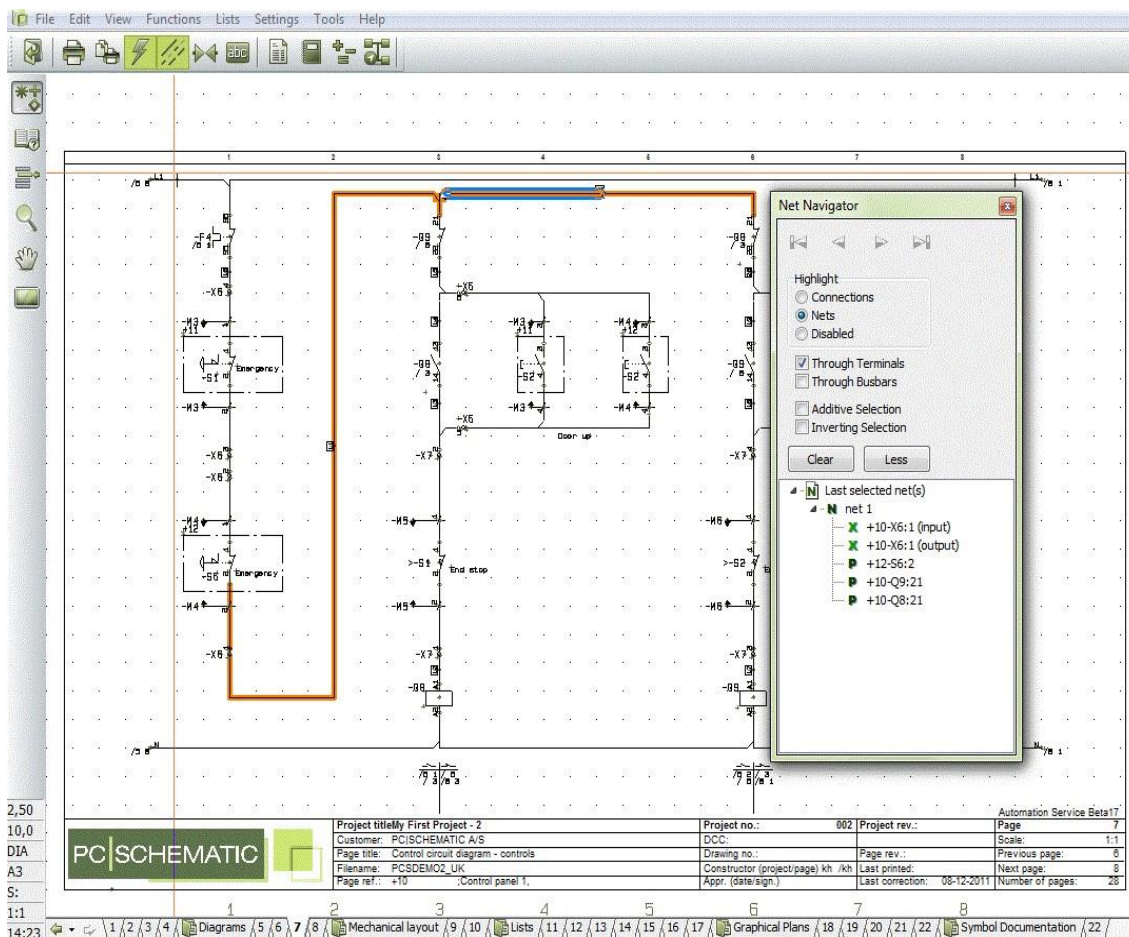
What is interesting about lines in a diagram is, that they represent potentials between components and that the potential often runs over several pages.

The function Net Navigator, which is accessed using the icon in the tool bar, makes it possible to mark one or more connections at a time and have a list of the connection points, where the potential is connected.

In the example below, you see a net (potential), which is marked in the diagram. The net is on several pages, and you can "jump" around in the net either by using references – see earlier in this booklet – or by clicking in the list that you see in the Net Navigator dialog.

In the list you can see, where the net is connected: P (pin) is a normal connection point on a component, X is a terminal. You can also see on a terminal whether the connection is on the internal/Input or the external/Output of the terminal row. If you "jump" to another page, the net is also marked there. You can either mark a single connection or a complete net, choose if the net must run through the terminals or busbars or you can choose to mark more than one net at the time (add) and remove all markings (clear).

If you have marked more than one net, the nets are showed one by one in the list. Finally, you can leave the Net Navigator visible or deactivated.



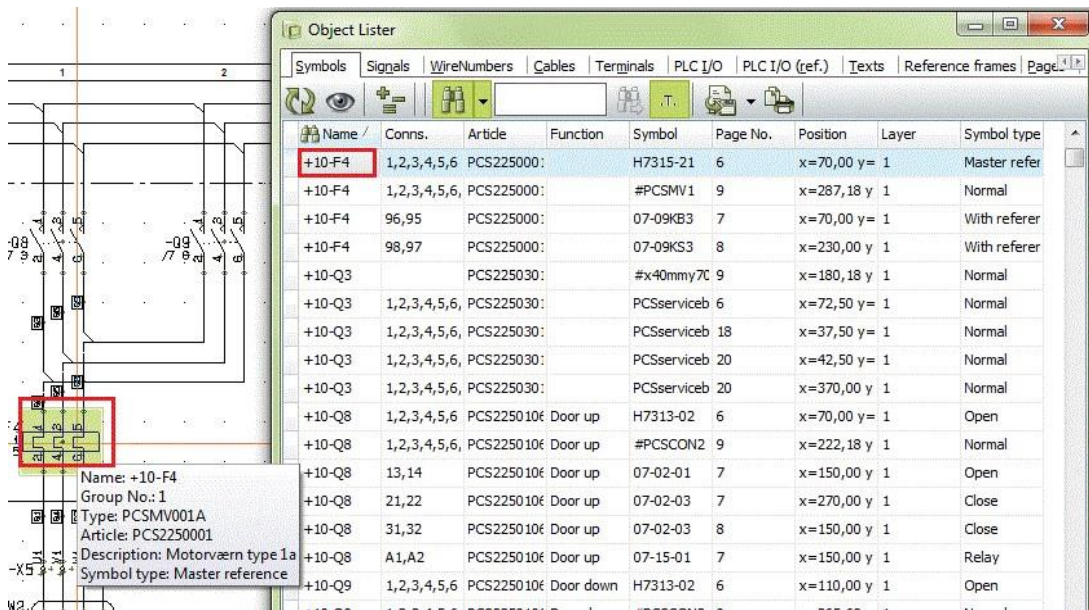
Object lists (F7)

You find Object lists by pressing the F2 button or by clicking on the icon in the menu.



All data in the project can be seen in the Object lists.

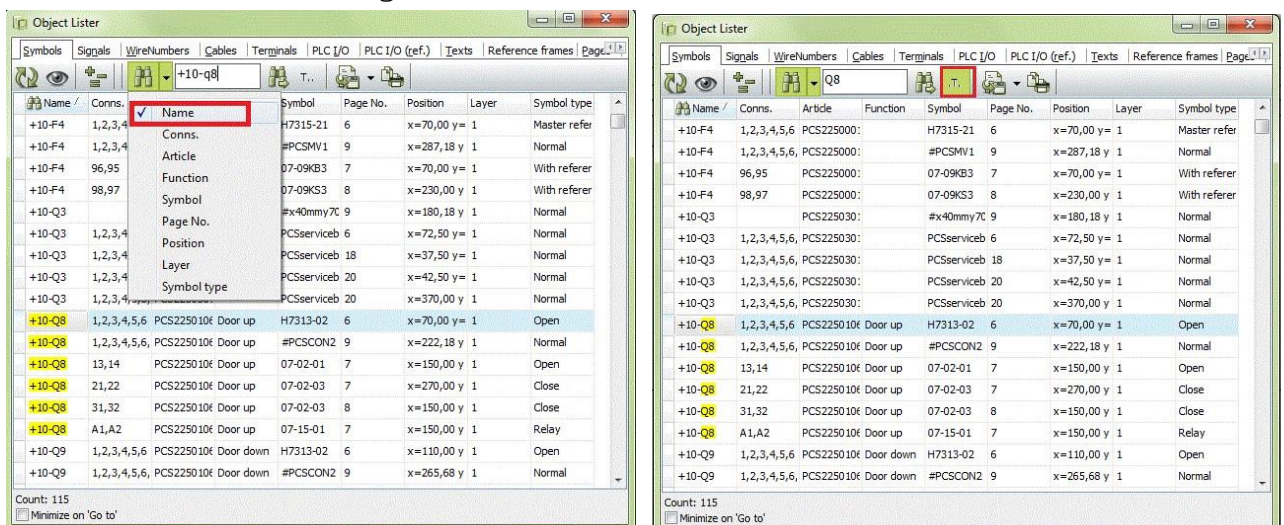
It's lists of all objects – symbols, pages, terminals etc. – existing in the project. Here you can also 'jump around' in the project, as there also are links to all objects from this window. You double-click only on what you will find.



Search in the Object List

You can search in various columns – name, connection, part No. etc. in the Object lists.

E.g. choose NAME and "Begins with" (left pic.), and in the list, the names will be marked with yellow. You can also choose NAME and "Contents" (right pic.) and you can see it in the list to the right.



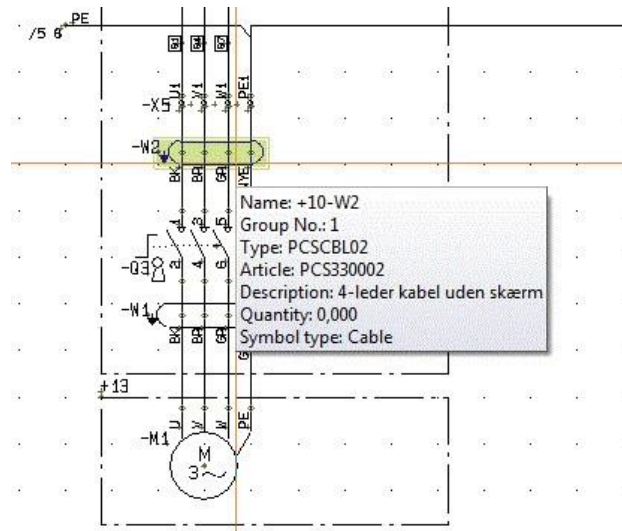
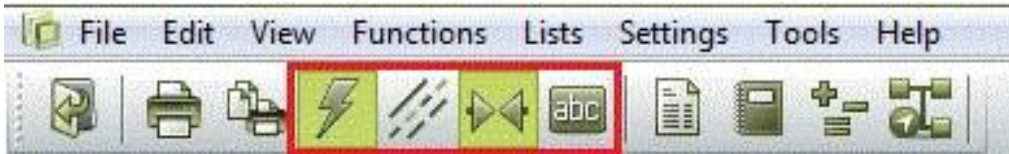
Try making your own settings by selecting fields and rearrange in order.

The object list may advantageously be placed in the right Page of a wide-screen.

Information about the different objects

When you navigate in the project on different types of objects, you can see information about them if you click on them.

You can either turn on “Auto command change” (the lightning) or shift manually between line (L for Wire), Symbol (S) or Text (T). You click on the icon or tap the shortcut.



When you leave the cursor on a symbol, you get information on the component in a pop-up window:

By clicking on a line, you get line information if there are any. Be aware, that wirenumbers are special symbols.

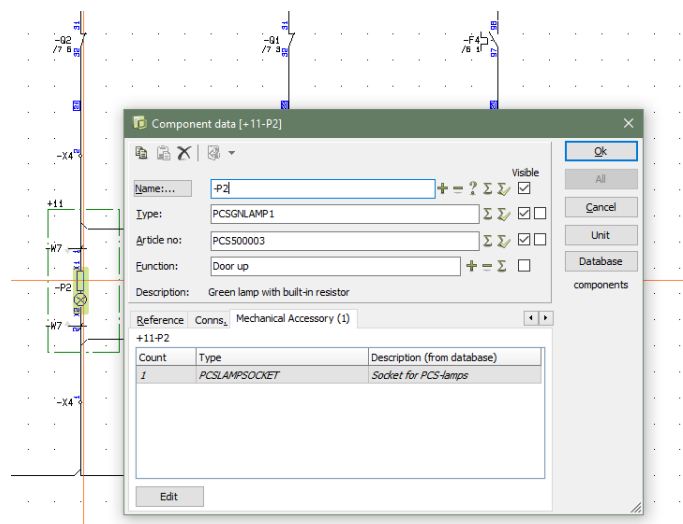
You can also get information on a text by clicking on it.

Component accessories

If a component has accessories, you can see the mechanical accessories in the Accessories tab:

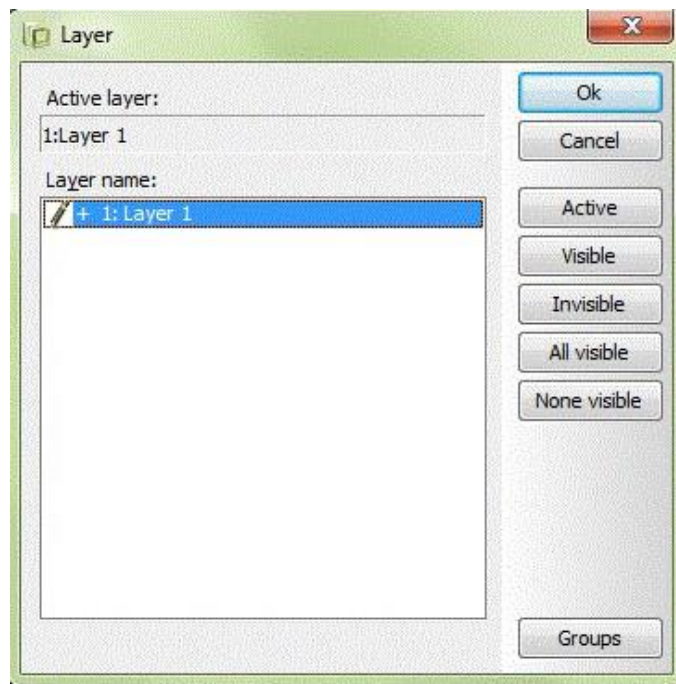
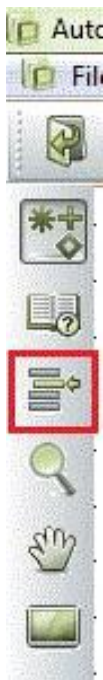
Items in *Italic* are fixed accessories as defined in the database, other items are attached by the designer of the project.

When you right-click on a symbol, you can select to see Electrical accessories.



Select active layer and visible layers

The project can be made in several layers. You find the layer button in the vertical



toolbar. When you click on the layer icon, you see a dialog box. By default, it's set to only show the active layers, so often you only see one layer.

If the page has more than one layer and you need to navigate to another layer, you can either double click on the wanted layer or click on Active followed by OK.

List to file

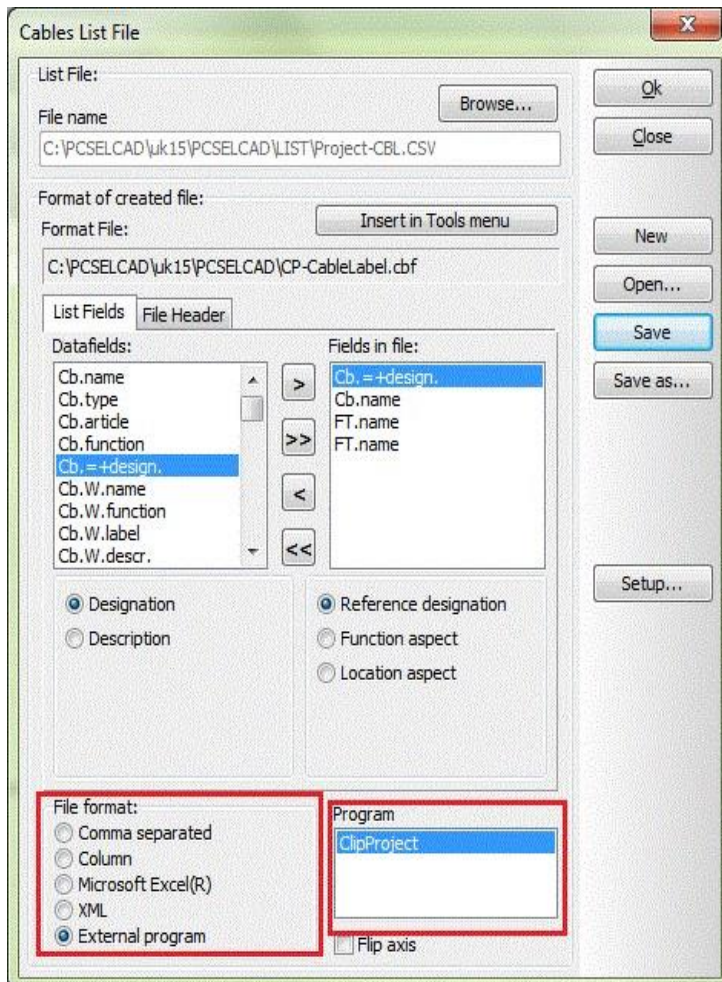
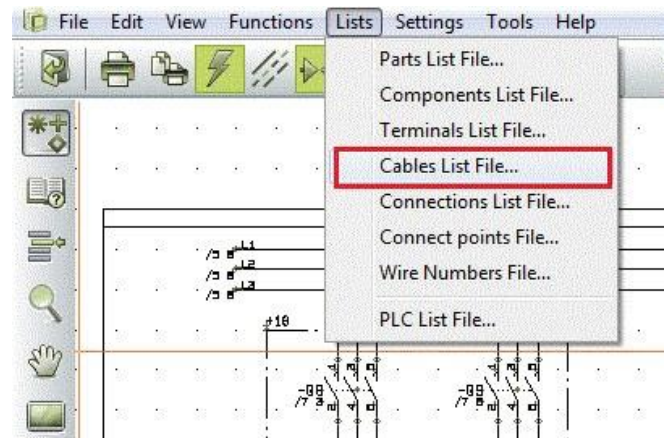
Print lists and labels

You can print all types of lists in different formats. All lists contain data based on the diagrams and labels are based on data from the lists.

To print out the different lists, you choose Lists in the main menu and then the type of list you want printed ex. a cable list.

The cable list must at least content cable name and possibly also information about from where to where the cable runs. Mark the data in the “Data field” you need to print and click > to transfer the chosen to ”Fields in file”.

Choose then the list format.



You need to do the same to print out labels.

If you install external programs to print labels it will appear in the "Fil format" as External program.

You can see which program you have installed in "Program". PCSCHMATIC Automation and Automation Service can interface directly to ClipProject and M-Print PRO.

If you would like to know more about printing labels, you can find much more information in the tutorial "Marking and Labelling".



SETTINGS

Project data

General data about the project can be found in Settings|Project data or by clicking on the book in the tool bar.

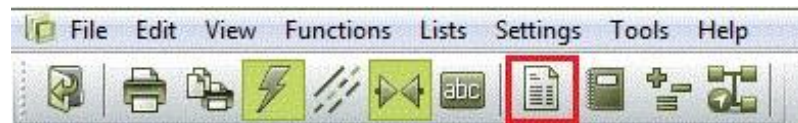
Some of this data you see in the drawing header.



Page data

Data regarding individual pages can be found in Settings|Page data or by clicking the page icon. The data varies from page to page.

Some of this data is also in the drawing header.

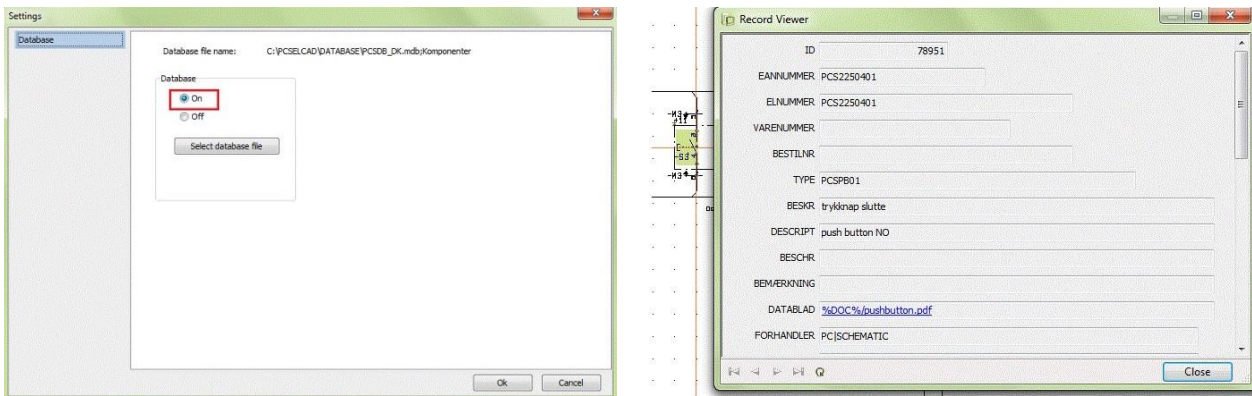


Page remarks

In Page Remarks you can read more detailed remarks for the selected page.

Component Database

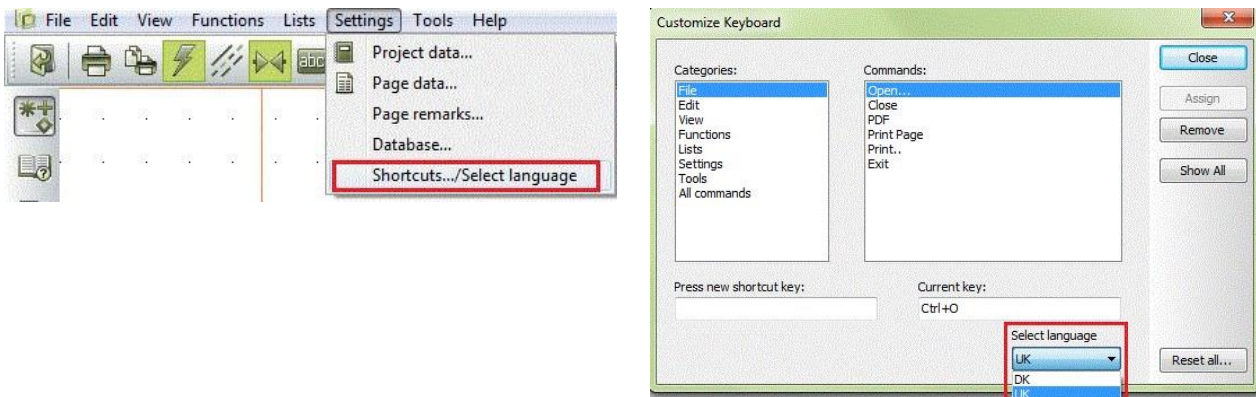
You can connect component database in Settings|Database.



When the database is connected you can right-click on a symbol in the diagram, click Open and that way access the component database and get more information about the components.

Change language

If you during the work with the service program, want to change language use Settings – Shortcut.../Change language.



Reference points



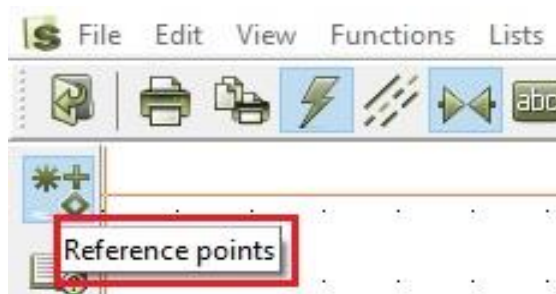
You may want to turn off the reference points, as it makes it easier to read texts in a diagram, especially around symbols.

Click on the icon in the vertical toolbar to turn them either on or off. If you use it often, you could make a shortcut for the function.

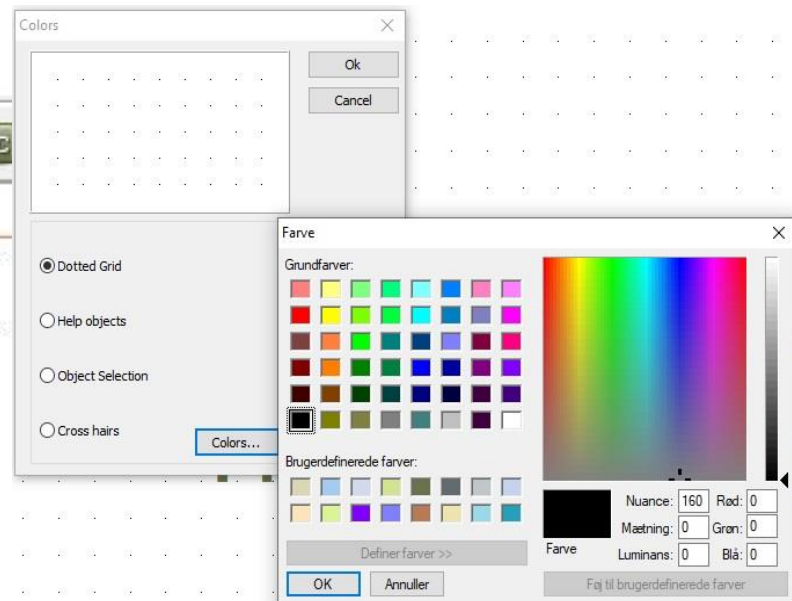


Change color on Reference points

Right click on the reference icon



Click on Colors... and you now have all colors to choose from.



Shortcuts

You can make your own shortcuts if you use some functions a lot.

Find the Menu where the command is located. In this case it's in the Menu View. Then click Settings and Short cuts.

Choose the category where the command is and then the command you want to give a short cut. Type your shortcut in "Press new shortcut key". If the shortcut key is already used for another command, you are not allowed to use it and that will be indicated at the bottom of the dialog box.

